

CUPE CAUSEWAY

LOCAL 1974

Fall 2016

CUPE 1974

Bargaining Survey

Please be aware that the Ontario Council of Hospital Unions (OCHU) bargains the central part of our collective agreement. Surveys are scheduled to be mailed to our members in approximately 2 weeks. Please fill out your survey to ensure that your voice is heard when our collective agreements are negotiated. Contact the office if you do not receive your survey.

Inside this Issue

Provincial Rally

Page 1

Party for Louis Page 2

CUPE Parties Page 2

Report from President Mike Rodrigues

Page 3

Upcoming Events

Page 4

**Join the conversation
on facebook CUPE
1974.**

Pull for Epilepsy



PULL FOR EPILEPSY JULY 2016

Our local started a team two weeks before the pull for epilepsy began this summer at city hall. The pull was held on July 16, 2106. Team members did their own fundraising and won the prize for the most funds raised (they actually set a new record for the most funds raised) Team members included; Mike Rodrigues, Lee Bentley, Terry Pascoal, Brent Tousignant, Jen Best, Al Killoran, Dave Smith, Jay Matheson and Bartley McClelland. Our team came in 1 second behind the winners of the event.

Rally in Kingston

October 27, 2016—Mark your Calendars

A Provincial Rally will be hosted by CUPE local 1974 on Thursday October 27, 2016.

We are protesting the provincial cuts to Ontario Hospital. Working with the Ontario Council of Hospital Unions we are inviting CUPE locals from throughout the province to join us in Kingston. The rally will be held at noon, and our members who aren't working are encouraged to come, and for our members who come out at 12:00 we will have a small bbq in front of the hospital.

Speakers will include CUPE National President Mark Hancock, CUPE Ontario President Fred Hahn, CUPE Ontario Secretary/Treasurer Candace Rennick, OCHU President Michael Hurley, OCHU 1st VP Louis Rodrigues, L1974 President Michael Rodrigues. Speaker lists may change as the date of the rally draws near.

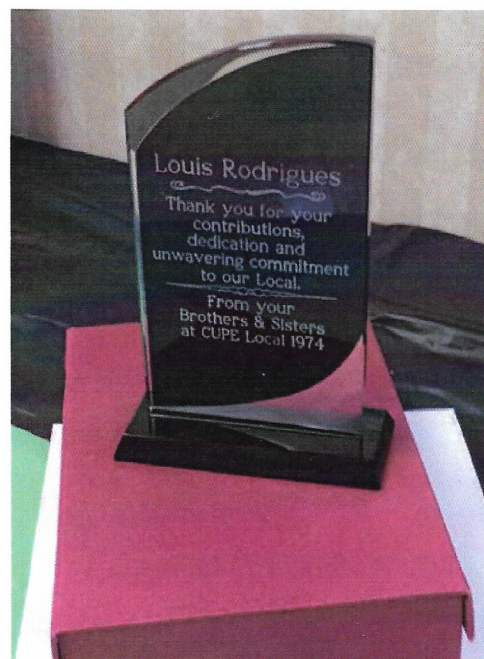
For more timely information please check our CUPE boards, facebook page, and website.

Appreciation Party for Outgoing

CUPE 1974 President Louis Rodrigues



CUPE Members past and present were invited to an appreciation party in honour of Louis Rodrigues, on June 17th, who served as our local's President for the last 25 years. Louis' contributions and dedication to our local are too numerous to count...whether fighting for our members at human resource meetings or fighting for our members at rallies on the street, Louis has always had the interests of our members at the heart of everything he has done. Louis continues to serve as the 1st VP of OCHU and only a phone call away if we need any help or assistance.



SOCIAL COMMITTEE

Kids party is December 03 1 - 4 .
Sign up is November 16th - November 30th.

Cupe Dinner and dance is December 10th 6 - 1.
Tickets will be available November 16th - December 07th.
Tickets will be 25.00 members and 35.00 non members

Committee Members: Roberta McTavish, Jen Best, Louise Shannon, Julie Vanluven, Jen Orr, Susan Webb,



HEALTH & SAFETY

BY Louise Shannon, CUPE 1974 chairprson

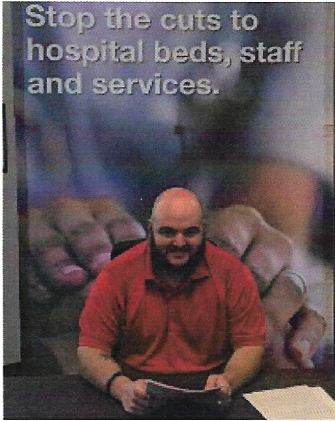
Hello to all members I would just like to take the opportunity to help members navigate KGH today and help them find their way to Health and safety policies. Start by going to KGH today go to kgh Community scroll down to Joint Health and Safety committee click , then go to quick links health and safety policies click on any policy (example scent free) Click on view and your there. I know sometimes when we face a health and safety issue we need to know what the policy might say , and help you with a safety issue you might be facing.

In June we had two visits from the Ministry of Labour. On June 6 a complaint was made regarding Burr 4 , the complaint was focus on worker travel between burr4 and the IOA.

On June 14 the Ministry of Labour visit was concerning a work place injury that occurred on Burr 4 . When the Ministry of Labour comes to pay a visit or write orders, documents are posted on all health and safety boards throughout the hospital, also the department where injury or hazard originated.

Sarah Costa and I would like to welcome our newest member to

President's Message



President Mike Rodrigues

It has been a very busy start to this term for our local. In March our membership elected a new executive. This executive is a great combination of returning executive members and many new faces wanting to become involved in the union. I am pleased to report that all of the stewards have received their first round of training

In March our membership elected a new executive. This executive is a great combination of returning executive members and many new faces wanting to become involved in the union. With negotiations approaching the executive decided it was a great time to be seen in the community, and get recognized for supporting the community. Cupe 1974 participated in the Truck Pull for Epilepsy on July 17 2016. Our local set a record in just 2 short weeks for the most donations collected, and finished less than 1 second behind the winners, GREAT WORK. We are also hosting a 3 pitch tournament September 24 2016 with all proceeds going to the united way.

We have had a very busy year with many arbitrations. Our legal has been working very hard and achieved some very favorable outcomes for our members. We have now completed our longest case which was 15 days of Arbitration and we are in anticipation of the award. We have several cases that we are awaiting dates that if successful would force the hospital to re-instate several full time positions across the bargaining unit.

On June 28th the hospital dropped a bombshell on all of us. The hospital announced the merger of Kingston General

Understandably there is a lot of anxiety and nervousness with this announcement and of course rumors. We are very early in this process and have had several meetings with OCHU and Cupe National and will be updating everyone as information becomes available. IF there is a representation vote all effected staff will be given all material needed to make an educated decision, you will be given collective agreement comparisons as well. Please remember we are a long way from that point, and no discussions between the unions has taken place. As for the rumors please contact the Cupe office at 6011 if you have any questions or concerns and we can address these instantaneously.

In the next few months OCHU will begin central bargaining. Please make sure you take time to fill out your survey and return them to OCHU, this is your opportunity to suggest changes to the central portion of our

WORKLOADS

By Terry Pascoal, VP CUPE Local 1974

Hello everyone, hope you all had a great summer.

One of the big things the local has been working on is the workload complaints. There seems to be an increase due to staffing issues across the hospital, I've been meeting with HR on a monthly basis to try to work through these issues. We have temporarily introduced a better way to communicate workload issues as explained back in April at our monthly meeting and communicated via our facebook page. The process now is to scan your workload complaint to your manager and cc myself.

Management has 21 days to respond directly to you and myself as to why the workload increase occurred. Please note that these forms can be printed off on our web page at www.1974.cupe.ca under Resources tab.

We are currently working on a online form, with the other unions in the hospital along with Human Resources and IT, which will notify management and the union Automatically, and both will receive copies of workload complaint, With this process we will be able to track the number of workload complaints in each area more efficiently and address problems when meeting with Human Resources

In our monthly Labour Management meetings, we are hoping to roll out in early spring the new process.



Thanks to All the supporters who donated to the cause, and who came to support the team at the match. We hoping to break new records next year.

2016—2018 ELECTED EXECUTIVE



Back row l-r Terry Pascoal, Sherry Cameron, Dave Smith, Tammy Bentley, Patty Hanna, Jen Orr, Janet McPhail, Brent Tousignant, Wendy From, Jen Best, Mark Roberts, Bill Hossack, Al Good, Mike Rodrigues (JLamb— has resigned) middle row l-r Shawn Noonan, Roberta McTavish, Julie Vanluven, Carrie Lindsay, Hugh Lavoie, Jason Matheson, Lee Bentley, and front Phil Joyce, photo by Sergeant at Arms Louise Shannon (not pictured) Call the office to contact a steward or exec member 613-548-6011

Labour Day—McBurney Park

Come Celebrate Labour day in McBurney Park (skeleton Park) on September 5, 2016. Union members walk to City Hall, followed by a few speakers. Then the parade returns to McBurney Park for a free bbq, giveaways, music and fun for the kids including bouncy castles, and face paints.

Upcoming important dates

September 5, 2016 Labour Day Celebrations,

September 26, 2016 General Membership 630, at our hall

October 10, 2016 Thanksgiving

October 27, 2016 Provincial Rally at Kingston

October 29, 2016 General Membership meeting at 10:00 at our hall

November 14—18 Bargaining Conference

November 21, CUPE Stat

No General Membership meeting in December.

January 28, 2016 General Membership at 6:30.



**SEPTEMBER 24
2016
CUPE 1974
FALL CLASSIC**

Tournament
Please come out with a team or to watch a fun filled day of 3-Pitch baseball. This is a charity event that is open to all.

\$375 per team/ 10 team max.

Teams must field minimum 3 female players

3 games each team guaranteed (No Playoffs)

Lunch Provided

All proceeds donated to United Way

Cupe Local 1974
Please contact ext 6041 to register your team.
Registration Deadline is September 7 2016

SILENT AUCTION. DEADLINES FOR BIDS WILL BE AT THE BASEBALL TOURNAMENT. PLEASE COME AS A PLAYER OR SUPPORTER OF THE TEAMS....HOPE TO SEE YOU THERE.

PLEASE JOIN OUR FACEBOOK PAGE CUPE LOCAL 1974 AND CHECK OUT OUR WEBSITE WWW.1974.CUPE.CA FOR DATES